



IMPERIAL GROUP



YOUR EVERY MOMENT

at



YOUR DREAM HOME AWAITS

FRONT VIEW



7:00am

Wake up to Nature's Symphony

The serene tune of the early morning breeze. The twittering of birds. The rustling leaves and swaying blossoms. At Life360, it is nature's true symphony that will wake you up each day!



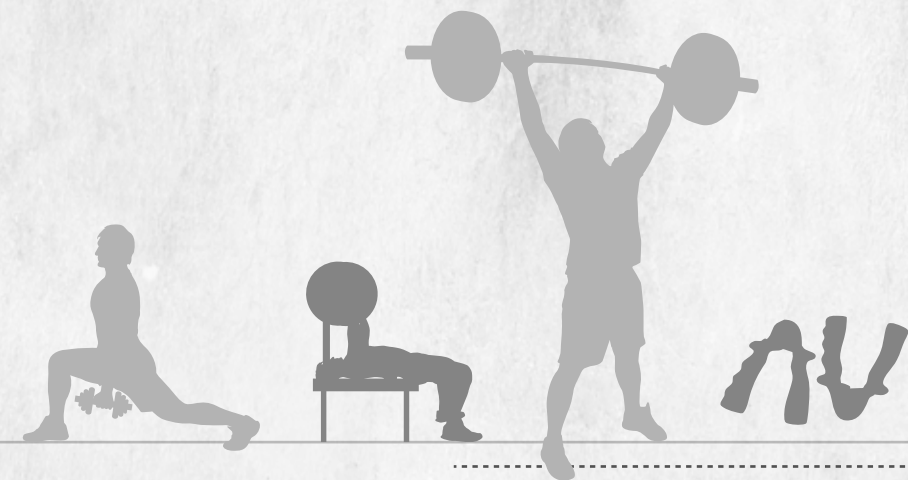
Days begin with nature at Life360



8:00am

Build a Fit Lifestyle!

Meet all your fitness goals at Life360! The fully equipped gymnasium and outdoor spaces bring you the perfect premise for building that healthy lifestyle you've always dreamt of. At Life360, the facilities are all here to help you get in your best shape!



Get your health in shape at Life360



9:30am

Begin Your Easy Commute!

Life360 enjoys an excellent central location that keeps you well connected to every part of the city. In other words, you can now cruise your way to work with zero rush and still have ample time on your hands! Reach all your destinations in the shortest amount of time from Life360.

The project is conveniently located at NH 37

| | |
|---|--------|
| District Transport Office, Kamrup (M) - | 150 m |
| ISBT - | 1.2 km |
| Royal Global University - | 1.3 km |
| Lokhra Police Station - | 1.8 km |
| Critical Care Hospital & Research Institute - | 2.1 km |
| Ayursundra Hospital - | 2.4 km |
| Delhi Public School - | 2.5 km |
| Sanskriti School - | 3.1 km |
| Indira Gandhi Athletic Stadium - | 3.4 km |
| Guwahati Railway Station - | 11 km |
| LGBI Airport - | 17 km |

KEY DISTANCES





CHILDREN'S PLAY AREA



3:00pm

Live to the Fullest Round the Clock!

- 60% Open Area
- 3 Sides Open Apartments
- Ample Parking Space
- Vastu Compliant
- Adjacent To The Main Highway
- Gymnasium
- Multi-purpose Hall
- Children's Play Area In Club
- Yoga Lawn Area
- Swimming Pool

Life360 brings you a wholesome and holistic living experience with comfortably spacious homes, modern amenities and facilities, excellent safety features and a connected location. Live your best life at every hour!

Holistic urban living at Life360



7:00pm

Dance to Your Heart's Rhythm!

Feel the surge of joy every day. Spend time doing things you love with the people you adore. Wrap your days up with moments of fun and relaxation. At Life360, there are ample luxuries to all your leisure hours!

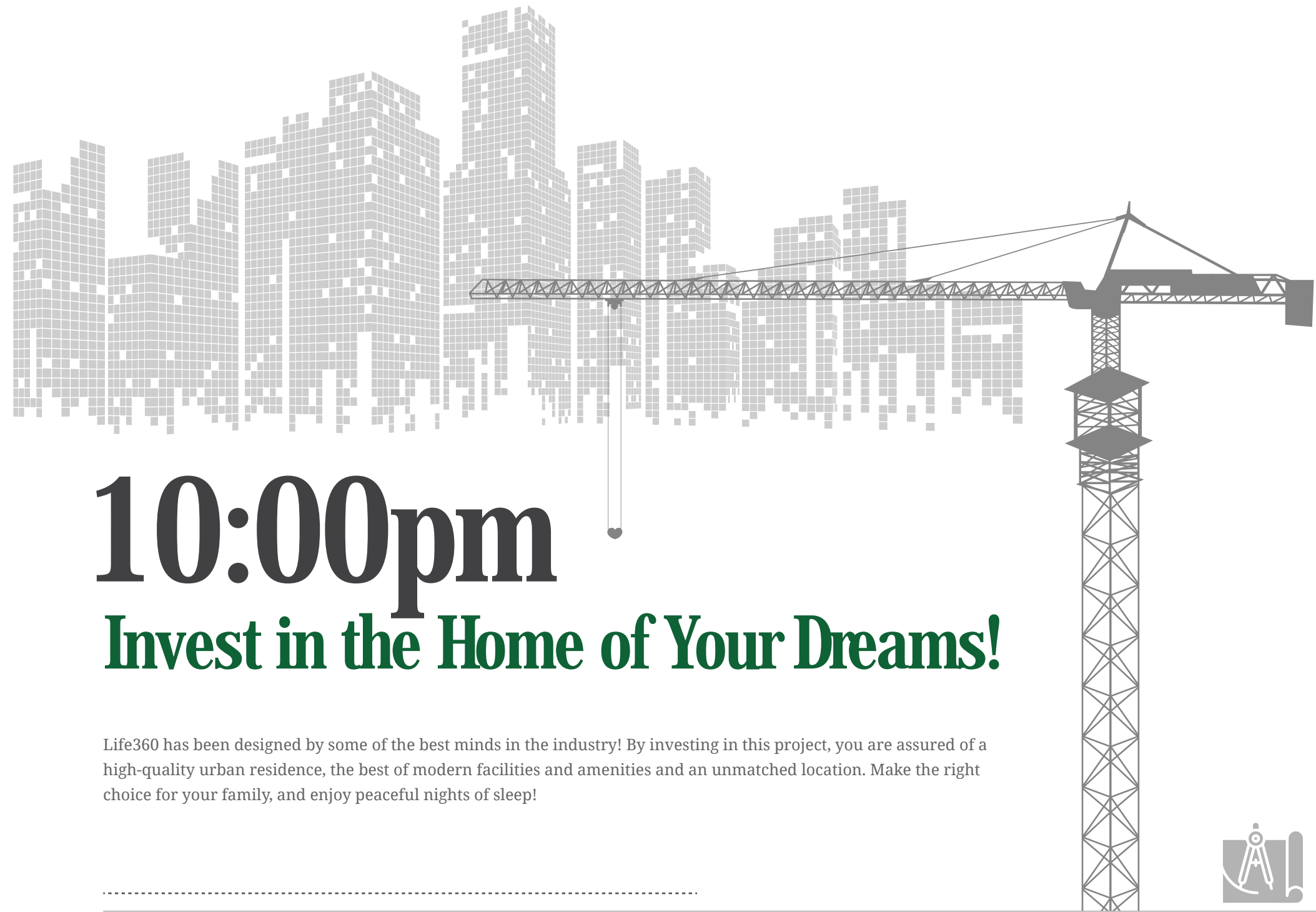


Fill your days with fun at Life360





SWIMMING POOL VIEW



10:00pm

Invest in the Home of Your Dreams!

Life360 has been designed by some of the best minds in the industry! By investing in this project, you are assured of a high-quality urban residence, the best of modern facilities and amenities and an unmatched location. Make the right choice for your family, and enjoy peaceful nights of sleep!



Be a proud owner of your house with Life360



BASEMENT FLOOR PLAN



FLOOR PLAN

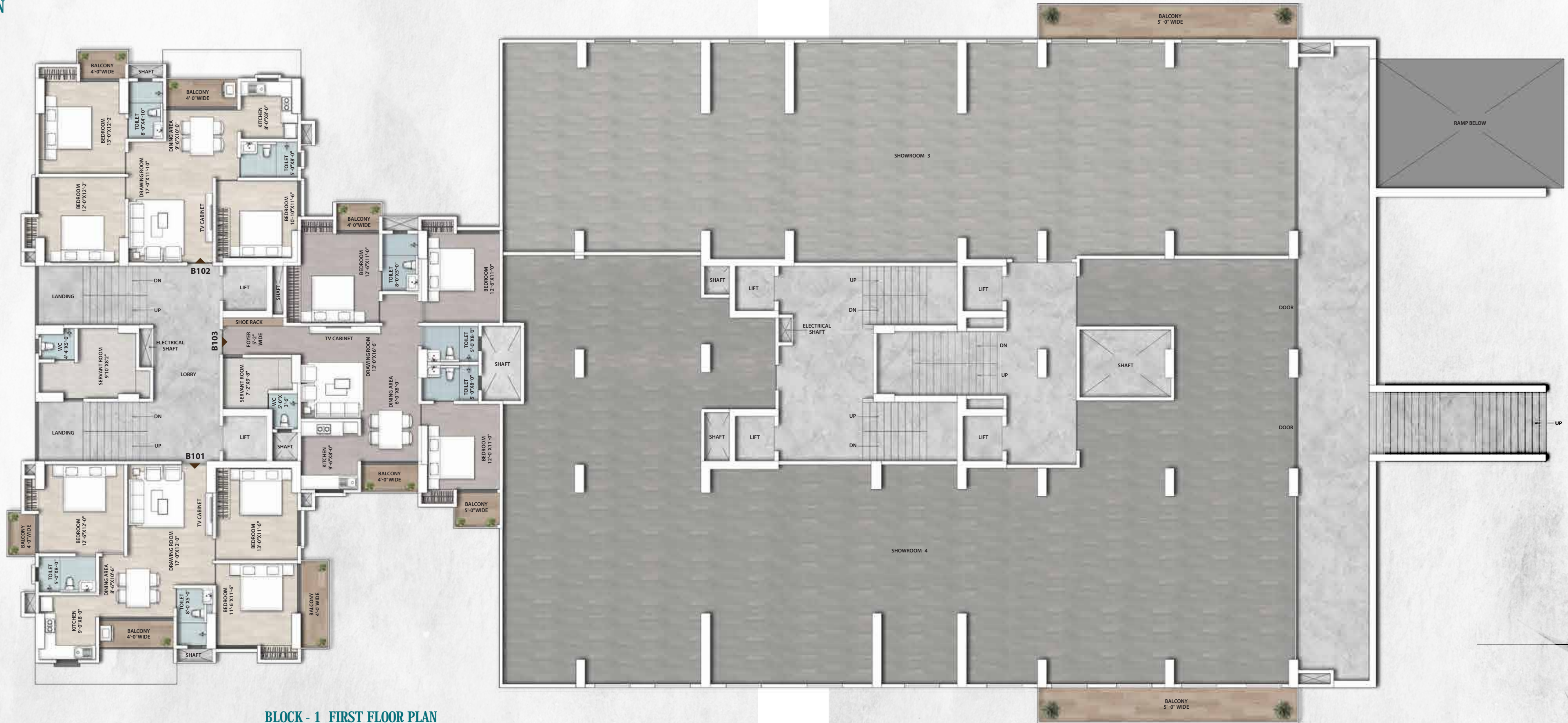


GROUND FLOOR PLAN WITH SITE

| SHOWROOM NO. | CARPET AREA | BUA | SBUA |
|--------------|-------------|------------|------------|
| SHOWROOM-1 | 769 SQ FT | 836 SQ FT | 1112 SQ FT |
| SHOWROOM-2 | 1165 SQ FT | 1252 SQ FT | 1665 SQ FT |



FLOOR PLAN



BLOCK - 1 FIRST FLOOR PLAN

| FLAT NO. | BHK | CARPET AREA | BALCONY AREA | BUA | SBUA |
|--------------|-------|-------------|--------------|------------|------------|
| B 101 | 3 BHK | 861 SQ FT | 113 SQ FT | 1076 SQ FT | 1431 SQ FT |
| B 102 | 3 BHK | 847 SQ FT | 65 SQ FT | 1013 SQ FT | 1348 SQ FT |
| B 103 | 3 BHK | 1088 SQ FT | 86 SQ FT | 1273 SQ FT | 1693 SQ FT |
| SERVANT ROOM | --- | 129 SQ FT | --- | 163 SQ FT | 217 SQ FT |

BLOCK - 1 FIRST FLOOR PLAN

| SHOWROOM NO. | CARPET AREA | BALCONY AREA | BUA | SBUA |
|--------------|-------------|--------------|------------|------------|
| SHOWROOM-3 | 3188 SQ FT | 179 SQ FT | 3591 SQ FT | 4776 SQ FT |
| SHOWROOM-4 | 4887 SQ FT | 179 SQ FT | 5371 SQ FT | 7143 SQ FT |



FLOOR PLAN



BLOCK - 1 SECOND FLOOR PLAN

| FLAT NO. | BHK | CARPET AREA | DOUBLE HEIGHT BALCONY AREA | BUA | SBUA |
|--------------|-------|-------------|----------------------------|------------|------------|
| B 201 | 3 BHK | 861 SQ FT | 192 SQ FT | 1155 SQ FT | 1537 SQ FT |
| B 202 | 3 BHK | 847 SQ FT | 140 SQ FT | 1089 SQ FT | 1448 SQ FT |
| B 203 | 3 BHK | 1088 SQ FT | 86 SQ FT | 1273 SQ FT | 1693 SQ FT |
| SERVANT ROOM | -- | 129 SQ FT | -- | 163 SQ FT | 217 SQ FT |

BLOCK - 1 SECOND FLOOR PLAN

| SHOWROOM NO. | CARPET AREA | BALCONY AREA | BUA | SBUA |
|--------------|-------------|--------------|------------|------------|
| SHOWROOM-5 | 3335 SQ FT | 179 SQ FT | 3746 SQ FT | 4982 SQ FT |
| SHOWROOM-6 | 5121 SQ FT | 179 SQ FT | 5602 SQ FT | 7451 SQ FT |

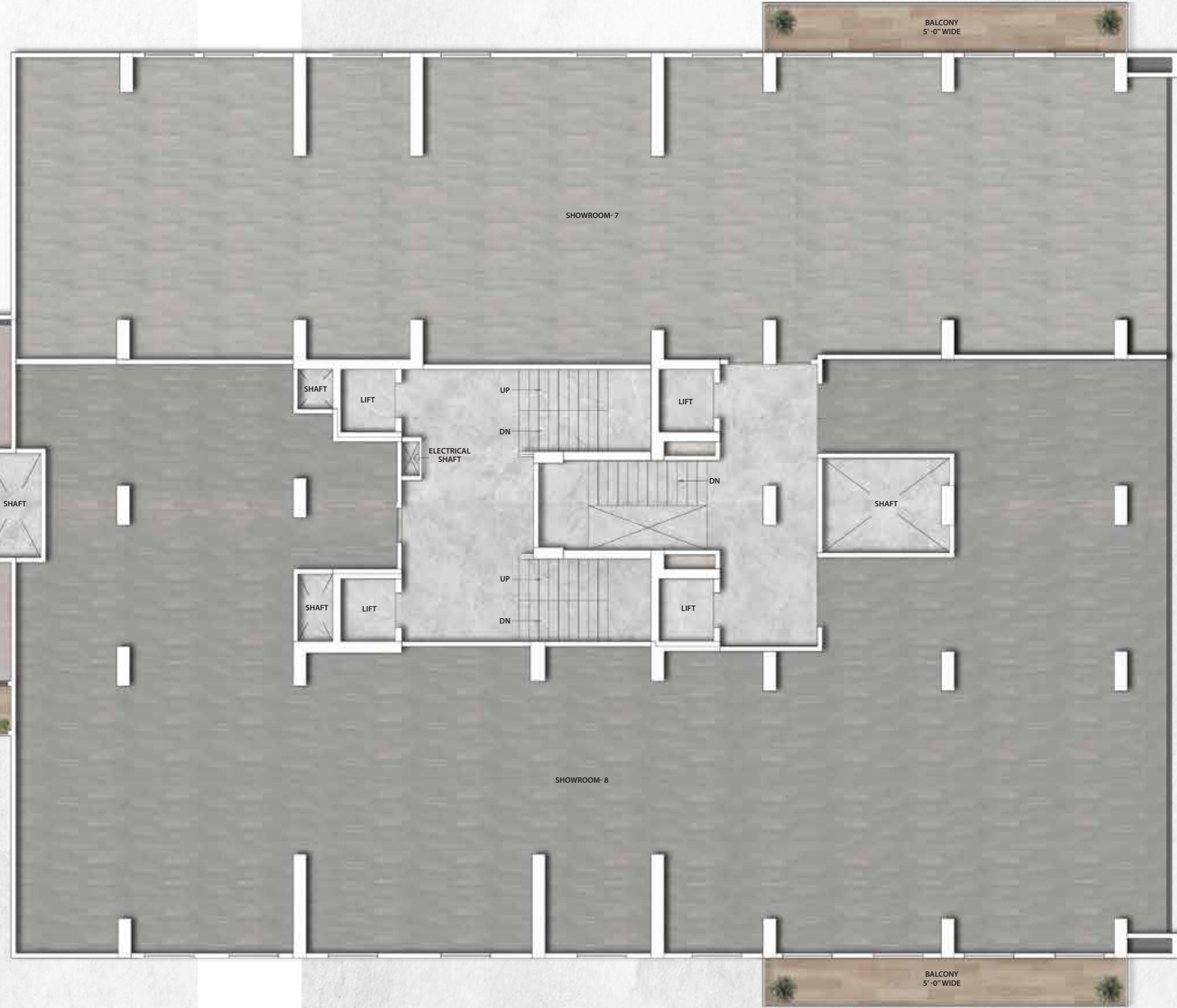


FLOOR PLAN



BLOCK - 1 THIRD FLOOR PLAN

| FLAT NO. | BHK | CARPET AREA | BALCONY AREA | BUA | SBUA |
|--------------|-------|-------------|--------------|------------|------------|
| B 301 | 3 BHK | 861 SQ FT | 113 SQ FT | 1076 SQ FT | 1431 SQ FT |
| B 302 | 3 BHK | 847 SQ FT | 65 SQ FT | 1013 SQ FT | 1348 SQ FT |
| B 303 | 3 BHK | 1088 SQ FT | 86 SQ FT | 1273 SQ FT | 1693 SQ FT |
| SERVANT ROOM | -- | 129 SQ FT | -- | 163 SQ FT | 217 SQ FT |



BLOCK - 1 THIRD FLOOR PLAN

| SHOWROOM NO. | CARPET AREA | BALCONY AREA | BUA | SBUA |
|--------------|-------------|--------------|------------|------------|
| SHOWROOM-7 | 3335 SQ FT | 179 SQ FT | 3746 SQ FT | 4982 SQ FT |
| SHOWROOM-8 | 5121 SQ FT | 179 SQ FT | 5602 SQ FT | 7451 SQ FT |



FLOOR PLAN



BLOCK - 1 FOURTH FLOOR PLAN

| FLAT NO. | BHK | CARPET AREA | DOUBLE HEIGHT BALCONY AREA | BUA | SBUA |
|--------------|-------|-------------|----------------------------|------------|------------|
| B 401 | 3 BHK | 864 SQ FT | 192 SQ FT | 1155 SQ FT | 1537 SQ FT |
| B 402 | 3 BHK | 850 SQ FT | 140 SQ FT | 1088 SQ FT | 1448 SQ FT |
| B 403 | 3 BHK | 1088 SQ FT | 86 SQ FT | 1273 SQ FT | 1693 SQ FT |
| SERVANT ROOM | --- | 130 SQ FT | --- | 163 SQ FT | 217 SQ FT |

BLOCK - 1 FOURTH FLOOR PLAN

| FLAT NO. | BHK | CARPET AREA | DOUBLE HEIGHT BALCONY AREA | TERRACE | BUA | SBUA |
|----------|-------|-------------|----------------------------|------------|------------|------------|
| A 401 | 3 BHK | 863 SQ FT | 116 SQ FT | 724 SQ FT | 1078 SQ FT | 1915 SQ FT |
| A 402 | 3 BHK | 1095 SQ FT | 88 SQ FT | 1311 SQ FT | 1285 SQ FT | 2581 SQ FT |
| A 403 | 3 BHK | 849 SQ FT | 66 SQ FT | 872 SQ FT | 1013 SQ FT | 1927 SQ FT |



FLOOR PLAN



BLOCK - 1 SIXTH, EIGHTH AND TENTH FLOOR PLAN

| FLAT NO. | BHK | CARPET AREA | DOUBLE HEIGHT BALCONY AREA | BUA | SBUA |
|--------------|-------|-------------|----------------------------|------------|------------|
| B 601 | 3 BHK | 864 SQ FT | 192 SQ FT | 1155 SQ FT | 1537 SQ FT |
| B 602 | 3 BHK | 850 SQ FT | 140 SQ FT | 1089 SQ FT | 1448 SQ FT |
| B 603 | 3 BHK | 1088 SQ FT | 84 SQ FT | 1273 SQ FT | 1693 SQ FT |
| SERVANT ROOM | - | 130 SQ FT | - | 163 SQ FT | 217 SQ FT |

BLOCK - 1 SIXTH, EIGHTH AND TENTH FLOOR PLAN

| FLAT NO. | BHK | CARPET AREA | DOUBLE HEIGHT BALCONY AREA | BUA | SBUA |
|----------|-------|-------------|----------------------------|------------|------------|
| A 601 | 3 BHK | 863 SQ FT | 195 SQ FT | 1160 SQ FT | 1543 SQ FT |
| A 602 | 3 BHK | 1095 SQ FT | 88 SQ FT | 1285 SQ FT | 1709 SQ FT |
| A 603 | 3 BHK | 849 SQ FT | 140 SQ FT | 1089 SQ FT | 1448 SQ FT |
| A 604 | 2 BHK | 628 SQ FT | 84 SQ FT | 790 SQ FT | 1050 SQ FT |
| A 605 | 2 BHK | 628 SQ FT | 84 SQ FT | 790 SQ FT | 1050 SQ FT |



FLOOR PLAN



BLOCK - 2 FIRST FLOOR PLAN

| FLAT NO. | BHK | CARPET AREA | BALCONY AREA | TERRACE | BUA | SBUA |
|----------|-------|-------------|--------------|-----------|------------|------------|
| C 101 | 3 BHK | 980 SQ FT | 92 SQ FT | -- | 1166 SQ FT | 1551 SQ FT |
| C 102 | 3 BHK | 936 SQ FT | 81 SQ FT | 192 SQ FT | 1113 SQ FT | 1608 SQ FT |
| C 103 | 4 BHK | 1171 SQ FT | 115 SQ FT | -- | 1390 SQ FT | 1849 SQ FT |



BLOCK - 2 SECOND TO EIGHTH TYPICAL FLOOR PLAN

| FLAT NO. | BHK | CARPET AREA | BALCONY AREA | BUA | SBUA |
|-----------|-------|-------------|--------------|------------|------------|
| C 201-801 | 3 BHK | 980 SQ FT | 92 SQ FT | 1166 SQ FT | 1551 SQ FT |
| C 202-802 | 3 BHK | 936 SQ FT | 81 SQ FT | 1111 SQ FT | 1478 SQ FT |
| C 203-803 | 4 BHK | 1171 SQ FT | 115 SQ FT | 1390 SQ FT | 1849 SQ FT |



Specifications

FOUNDATION & SUPER STRUCTURE

Earthquake resistant RCC framed structure.

WALLS

Inside walls finished with putty. Exterior walls finished with high quality waterproof paint.

KITCHEN

Wall tiles dado up to 2 ft above granite counter slab. Stainless steel sink.

FLOORING

Vitrified tiles in living, dining, kitchen and bedroom.
Vitrified tiles in the lobby and main entrance.

STAIRCASE

Marble / Kota stone / Green marble in staircase with stainless steel railing.

SANITARY WARE

Hindware / Parryware / Essco / Jaquar / American Standard / equivalent.

DOORS

Vinyl / Laminated main door with lock. Solid core flush door (bare) / Bathrooms / Balcony.

WINDOWS

Sliding glass windows with aluminum frame.

TOILETS

Anti-skid floor tiles, ceramic tiles dado up to 7 ft wall height.

C.P. FITTINGS

Jaquar / Essco / American Standard / Parryware / equivalent.

ELECTRICAL

Concealed wiring with MCB, DB and modular switches of reputed brands.

Provision for easy and safe installation of Split Air Conditioners in 2 rooms.

T.V. point in all bedrooms and living room (only conduit laying- no wiring).

Telephone outlet and intercom facility in living room.

Geysers provision in all bathrooms.



LIFTS

Adequate numbers of automatic lifts of Otis/ Kone/ Schindler/ TKE / equivalent make.

FIRE SAFETY

Fire fighting arrangements are as per FESSA.



OTHER AMENITIES

Clubhouse on 4th floor with amenities such as swimming pool, gymnasium, children's play area, green lawn, multipurpose hall.

Water supply with iron removal plant.

Sewage treatment plant.

CCTV installed in ground floor lobby and main entrance.

FACILITIES & AMENITIES

Multipurpose hall

Visitors car parking space

Separate car wash area

24X7 security

CCTV camera for common area

EV charging station

SPECIAL FEATURES

Vaastu compliant

3 sides open apartments





AERIAL VIEW



DEVELOPERS



Imperial Group

Imperial Infratech
3rd Floor, B.R. Arcade
21, Janapath Lane, Ulubari
Guwahati - 781007
impinfra.ghy@gmail.com
Contact - 7099014381 / 8822188707

ARCHITECT



BHAJANKA ASSOCIATES
Ar. Anuj Bhajanka

STRUCTURAL ENGINEER

SPA CONSULTANTS
ER. Sanjiv Parekh

VAASTU EXPERT

Basant R Rasiwasia,
Mumbai
www.revivalvaastu.com

SITE ADDRESS

NH 37, adjacent to Spectrum Honda Showroom,
Near District Transport Office, Betkuchi, Lohra,
Guwahati - 781034.

RERA REGISTRATION NO: RERA KM 34 OF 2024-25

MEMBERS



DISCLAIMER

This brochure is not a legal document. It describes the conceptual plan to convey the intent and purpose of Life 360. The images are imaginary and the details mentioned in this brochure are tentative and subject to change at the sole discretion of the developer and/or architects.